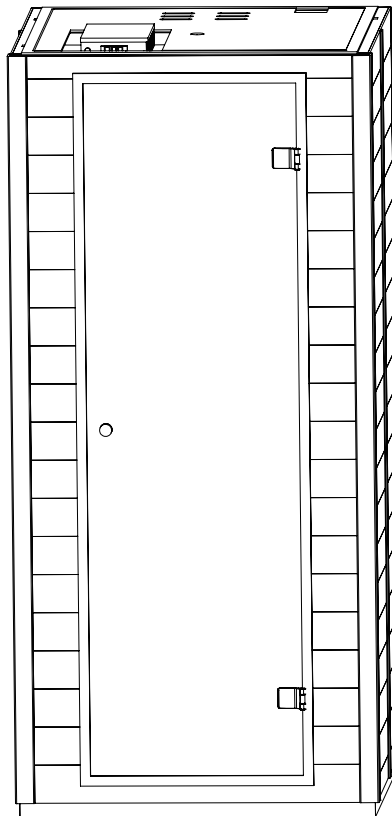


Infrared Sauna

Operating instruction



— Infrared makes life more healthy —

Due to our continued product improvement, product illustrated on this instruction manual may vary slightly from the actual product.

Warning

- 1、 The appliance is to be continuously attended.
- 2、 The sauna room or cabin is to be inspected before setting the appliance to a standby mode for a delayed start.
- 3、 Cleaning with steam cleaners, high pressure cleaners and spraying water is not allowed.
- 4、 It is recommended that the infrared cabin should not be used within 24 h after UV radiation exposure from artificial sources or sun-bathing.
- 5、 Individuals who may be at risk from hyperthermia, such as individuals suffering from cardiovascular disease, should seek medical advice before use of infrared warming cabins.
- 6、 When persistent erythema (reddening of the skin lasting more than a day) and netlike colour changes persist after regular exposure to infrared radiation, exposure should not be repeated and medical advice should be sought to prevent development of erythema ab igne.
- 7、 If you are a person with compromised heat pain sensation or under the influence of alcohol or tranquilizers you should not use infrared warming cabins.
- 8、 A pilot lamp showing that the heater or infrared emitter is switched on is to be installed in the attendant's room.
- 9、 This appliance is not intended for use by persons (including children) with reduced physical, sensory or mental capabilities, or lack of experience and knowledge, unless they have been given supervision or instruction concerning use of the appliance by a person responsible for their safety.
Children should be supervised to ensure that they do not play with the appliance.
- 10、 If the supply cord is damaged, it must be replaced by the manufacturer, its service agent or similarly qualified persons in order to avoid a hazard.

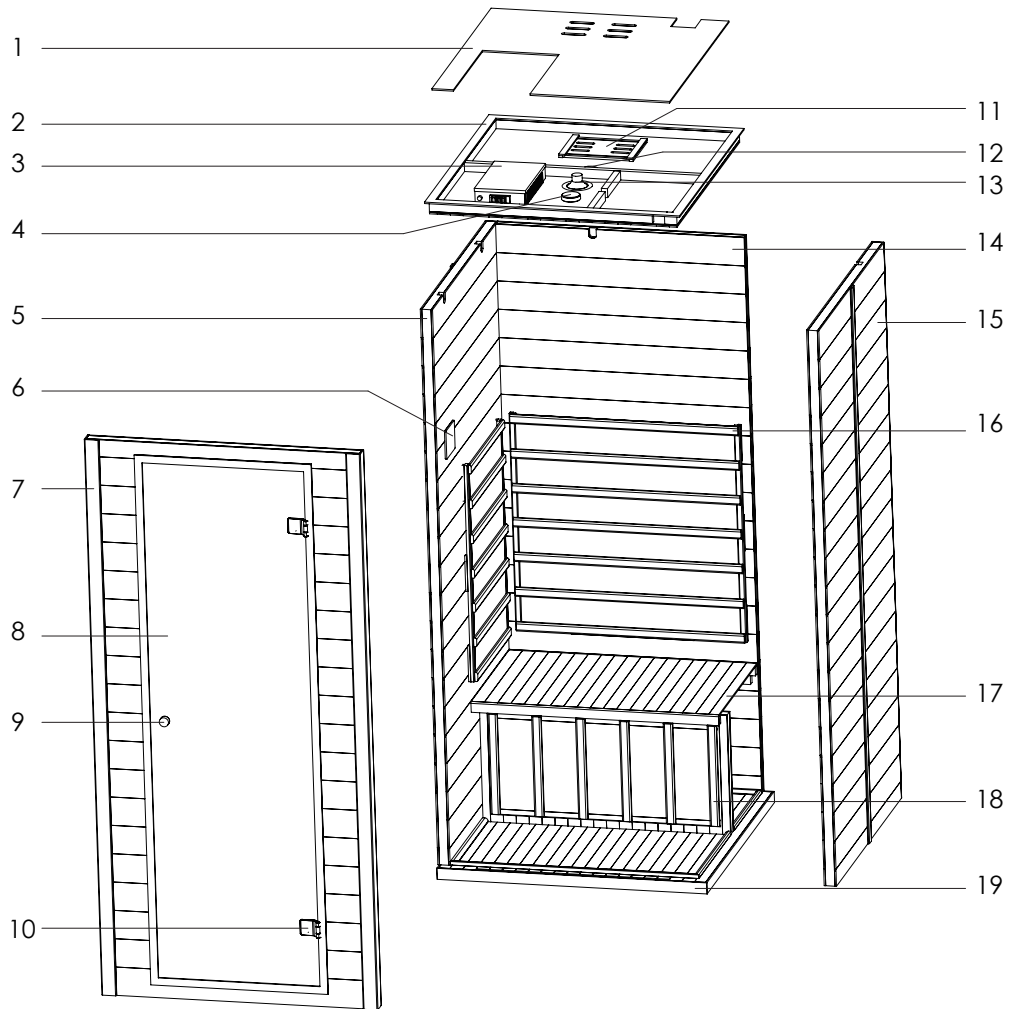
Important safety guides



Please strictly follow safety precautions when using!

1. Children must be using the equipment under the care of an adult. For safety, do not play with it ;
2. Do not insert objects such as fingers or sticks into the heating tube plate to prevent danger ;
3. Never pour water to the equipment or the heating pipe (board) ;
4. Do not use or store flammable gas or liquid such as hair spray, oil paint, gasoline, etc near the equipment to avoid fire ;
5. Do not place items inside or on top of the sauna ;
6. Do not touch the power control panel and any electrical components with wet hands to prevent electric shock ;
7. It is forbidden to use the equipment during thunderstorms to prevent electric shock ;
8. Do not tilt the equipment, do not use sharp objects to strike ;
9. Shut down the equipment for half an hour after 4 hours continuous working ;
10. Do not operate the equipment in a long-term high temperature environment ;
11. Use with caution after drinking alcohol ;
12. Those who have hemophilia or are prone to bleeding should avoid using it ;
13. Please consult your doctor before using if you are in period of disease and taking medicine ;
14. Do not use after intense exercise, wait until the body temperature returns to normal before using ;
15. If you feel any discomfort, please stop using immediately ;
16. Mind your head when get in and out of the equipment ;
17. Do not sleep inside the equipment when it is working ;
18. Do not use any bath products in the sauna ;
19. To avoid burns, do not touch the heating element ;
20. **WARNING:**Covering the heater or infrared emitter causes fire risk!
21. If you have any questions, please call the supplier.

Structure of infrared sauna

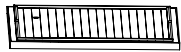


- | | | | |
|----------------|-----------------|-----------------------|----------------------|
| 1 Duster cover | 6 Control panel | 11 Ventilation | 16 Heater frame |
| 2 Top board | 7 Front board | 12 Temperature sensor | 17 Bench |
| 3 Control box | 8 Door glass | 13 Light | 18 Bench front board |
| 4 Speaker | 9 Handle | 14 Back board | 19 Bottom board |
| 5 Left board | 10 Hinge | 15 Right board | |

*The structure may vary from different models

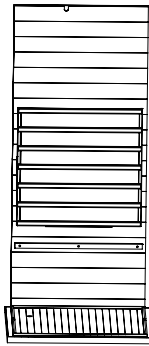
Installation process

1



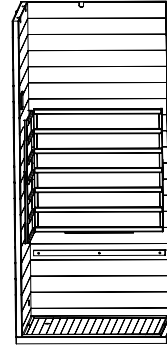
Bottom board

2



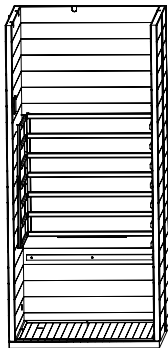
Back board

3



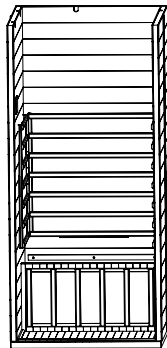
Left board

4



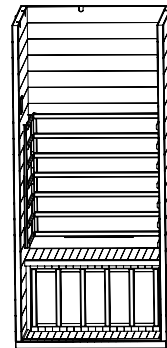
Right board

5



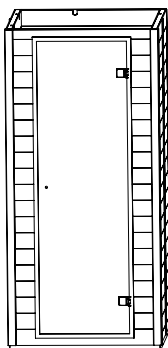
Bench front board

6



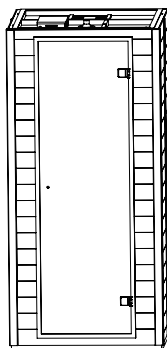
Bench

7



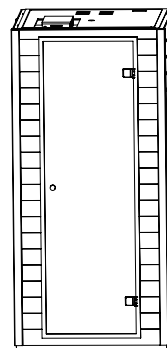
Foot board

8



Top board

9



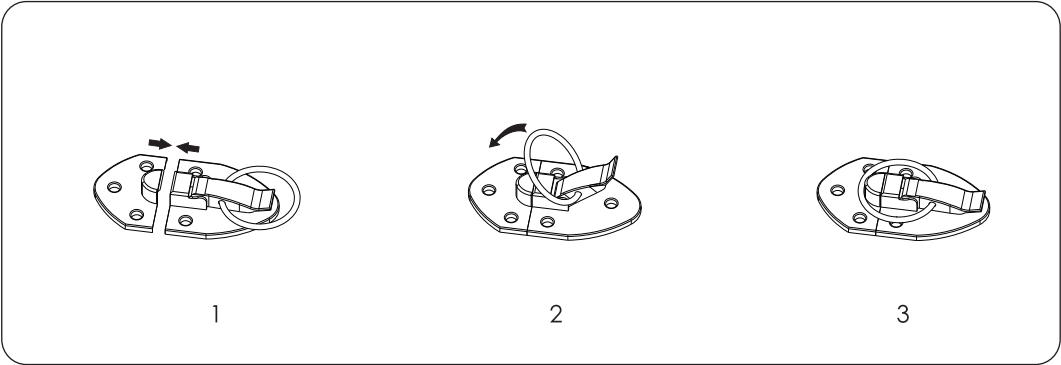
Duster cover and handle

* The structure may vary from different models. Due to our continued product improvement, product illustrated on this instruction manual may vary slightly from the actual product.

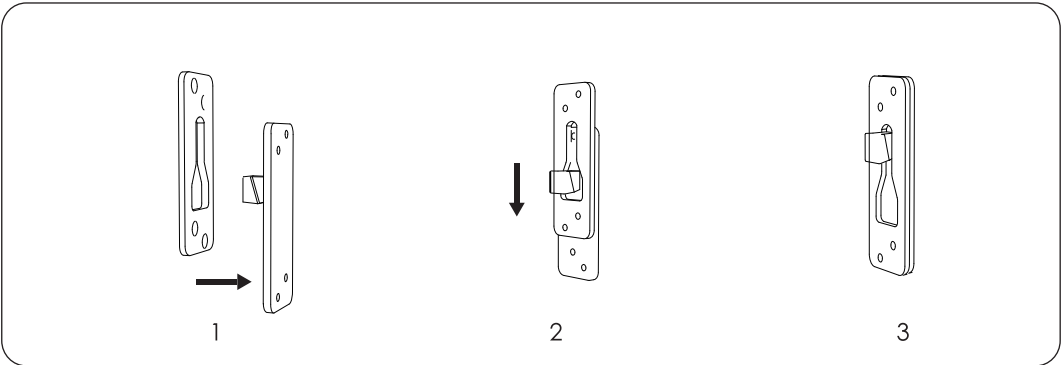
Installation precautions

Large plate assembly

Outer buckle installation method



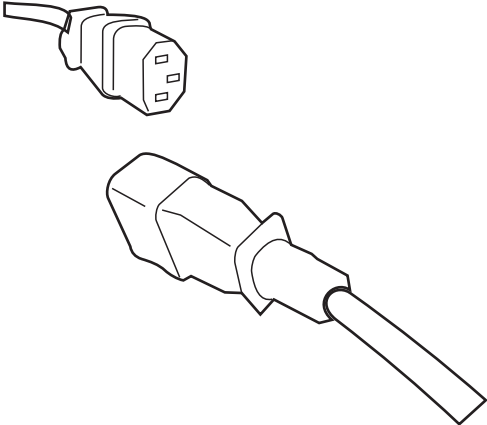
Hanging buckle installation method



Installation precautions

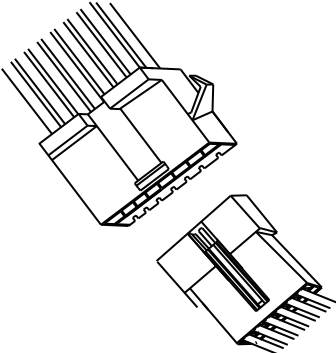
Electrical connection

1



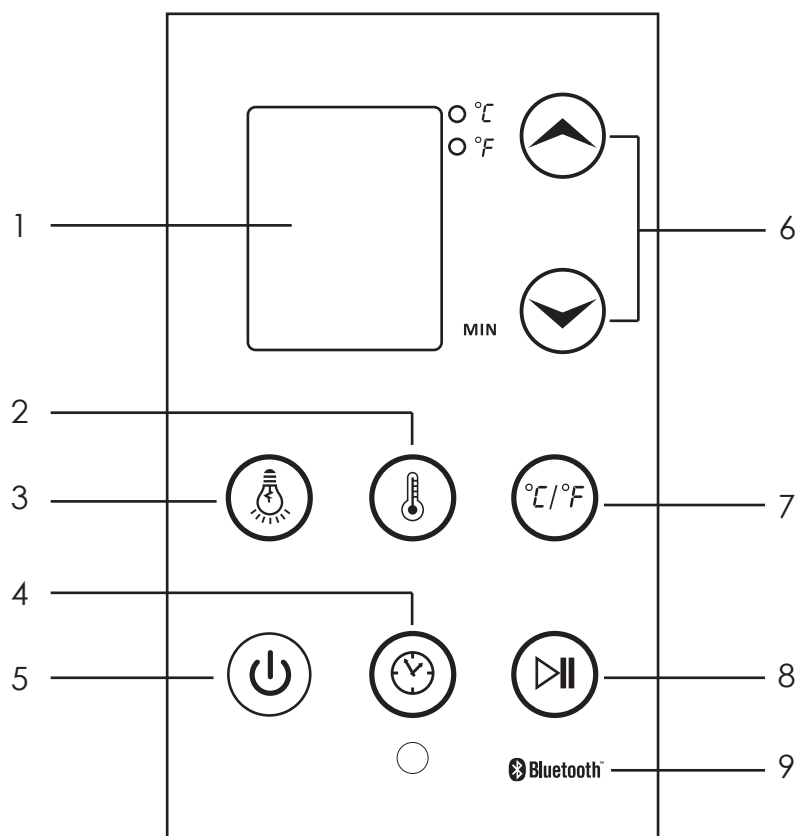
Conection cable

2



Connection plug

Control panel operation(E)



1 Display screen

For temperature and timer display.

2 Temperature button

Press the key to temperature adjustment state.

3 Light button

Press the key to turn on/off the light.

4 Time button

Press the key to time adjustment state.

5 Power button

Press this key to turn on or turn off the sauna.

6 Adjust button

Press '▲' and '▼' to adjust the temperature setting and the timer setting.

7 Temperature type

Press to change the temperature display between °C/°F.

8 Pause/Play

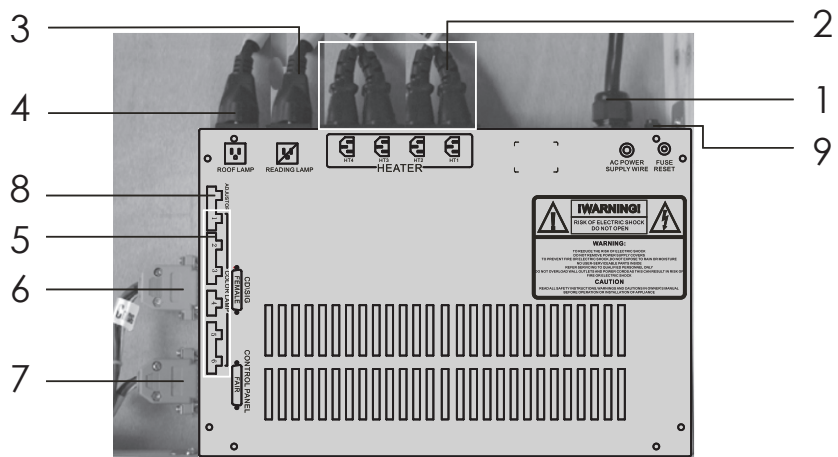
Press to control the working functions of the sauna.

9 Bluetooth

Control panel can be connected to devices to play music.

Control box

This control box is the control center of sauna room, it is installed on the top board, input/output connections as below.



- | | |
|---|--|
| <ul style="list-style-type: none"> 1 MAIN POWER 2 HEATER 3 READING LAMP 4 ROOF LAMP 5 COLOR LAMP 6 CTRL 7 CD/SIG 8 ADJUST 9 FUSE | <ul style="list-style-type: none"> main power of the sauna room heaters power output cable(HT1, HT2, HT3, Ht4) reading lamp power output cable roof lamp power output cable (in some models) color lamp power output cable(optional) control panel connecting signal cable group color adjust fuse reset |
|---|--|

The function of COLOR LAMP and AD JUST is useful only when color lights are setup in to sauna

Maintenance

Before using

1. Please be sure to follow the instruction manual before operations ;
2. Prepare a towel on the seat bench to prevent sweat from dripping onto it.To avoid affecting the quality and beauty of wood.

After using

1. Please unplug the power plug in time ;
2. Open the door to let the heat and humid water vapor dissipate and keep the sauna cabin dry.

Stain on wood

1. The outer cabin can be wiped with a wrung wet towel; The inner cabin can be wiped by small vacuum cleaner.
2. Do not use organic solvents to decontaminate, such as gasoline, alcohol, etc. wipe the sauna surface;
3. Do not use sharp objects in sauna cabin to prevent scratching woods.

Stain on glass

1. Wipe the glass with soft paper;
2. Stubborn stains can be wiped with a damp cloth, then dry with a dry cloth;
3. Do not scratch the surface with a sharp object to prevent scratching the glass.

Transportation and storage

1. Avoid water, snow and intense impact during the transportation;
2. Do not store it in a humid environment;
3. The northern climate is relatively dry, often wipe the product with a wrung wet towel;
4. The climate in the south is relatively humid and can be ventilated and dried frequently.

Trouble shooting

General content

Number	Problems	Possible reasons	Countermeasure
1	Indicator light for powersupply not working	The connector is not connected properly	Check the connector or replace a new one
		No power supply input	Chick the circuitry (especially weather there is power supply input)
		Indicator light is broken	Replace the circuitry panel
2	Indicator light for function is not working	The heating indicator light is broken	Replace the relevant control panel
		The circuit board or components are broken	Replace the circuit board
		The temperature sensor is broken	Check if the connect is loosen and replace it
3	Infrared Heater not heating up	The heater is broken	Replace with a new one Of the same specifications
		The wire junction or the heater's wire is loosen	Check and make them tight
		The temperature sensor is broken	Check if junction of the temperature sensor is loosen and replace it
		The circuit board of the relay is not work	Replace the circuit board
4	Odor from the sauna	The circuit's problems	<ol style="list-style-type: none"> 1) There is eyewinker around, remove it 2) Some heater's temperature over high,cut off the power supply,replace it. 3) Parts on the circuitry is broken

Trouble shooting

1. No Heat Coming From Some Of The Heat Emitters

Check to make sure all the heat emitter cords are properly connected, including the cord Solution: to the heat emitter underneath the bench (if applicable). Go to the roof, and also check that the heat emitter cords are properly connected to the cords on the roof and that those cords are properly plugged into the power supply. If some of the heat emitters are working, then the ones which are not working may Solution: have been damaged. Do not continue to operate. Contact the manufacturer for replacement parts. If the heat emitters are not working but the control panel displays the time and Solution: temperature, then the temperature sensor may not be plugged in properly or it may be damaged. Turn the control panel off and then go to the roof of the sauna and locate the red and black wires near the air vent towards the rear of the sauna. After you have located the red and black wires labeled "TEMP", disconnect them. Connect the spare temperature sensor. For testing purposes, insert the "TEMP"(you just connected) down the vent on the roof so that it is now inside the sauna. Then go to the control panel and press the power button. If the heat emitters now have heat, then the "TEMP" was the cause of the problem. You may have to wait about five minutes to confirm if the heat emitters are generating heat. Remove the original temperature sensor from its hole and replace it with the spare one.

2. Control Panel Malfunctioning

The control panel will turn on, but not off and the displayed numbers flash. The issue Solution: maybe a connection problem. Go up to the roof and locate the "Control" wire harness you Disconnect the "Control" wire connected when the roof was installed onto the sauna room. harness, check the pins to make sure they are straight and not bent, and firmly reconnect the "Control" wire harness. Attempt to turn the sauna on at the control panel and check to see if the buttons are now responding. Contact the manufacturer for any additional troubleshooting. The control panel will not turn off, the power/work/or heat lights do not come on, or the Solution: temperature and timer buttons do not work means the control panel may have been damaged and will need to be replaced. Contact the manufacturer for additional troubleshooting.

3. Sauna Shows Signs Of No Power

There could be one of a few problems causing this. First, check to see if the cord from the Solution: power supply is plugged into the wall outlet. Also check your main circuit breaker to confirm that it has not tripped. Check the power supply on the roof of the sauna to make sure there are no signs of malfunctioning, such as a high temperature, burning odor, or strange sounds. Also, check to make sure none of the power cords are damaged. If the power supply is malfunctioning or power cords are amaged, then unplug the sauna immediately and contact the manufacturer. If your sauna is plugged in and you have no power at the control panel, then the power Solution: supply may need to be reset. Go to the roof of the sauna and locate the power supply. Press the RESET button to reset the power supply. The RESET button is on the same side of the power supply as all the heater cord connections. Attempt to turn the sauna on at the control panel. Contact the manufacturer for any additional troubleshooting. There could be damage to the temperature sensor. If your sauna arrived with a spare Solution: temperature sensor, turn the control panel off and go to the roof of the sauna and locate the red and black wire near the air vent towards the rear of the sauna. After you have located the red and black wires labeled“TEMP”, disconnect them. Connect the spare temperature sensor. For testing es, insert the“TEMP” (you just connect-ed) down the vent on the roof so that it is now purpos inside the sauna. Then go to the control panel and press the power button. If the heat emitters now heat, then the temperature sensor was the cause of the problem. You may have to wait about five minutes to confirm if the heat emitters are generating heat. Remove the original temperature sensor from its hole and replace it with the spare one. Check the wiring harnesses coming from the power supply located on the roof of the sauna. Solution: Make sure the wiring harness labeled “Control” is connected to the power supply at one end and connected to another wiring harness labeled “Control” at the other end. If this wiring harness is not properly connected, then the sauna will show signs of having no power.

Infrared Sauna

Operating instruction